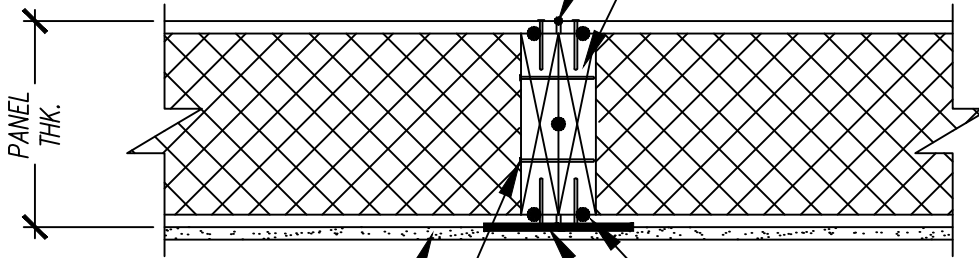


PANEL EDGE SEALANT AT ROOF PANELS ONLY

DOUBLE 2x OR ENGINEERED LUMBER SPLINE ATTACHED W/ MINIMUM 8d (2.5"x0.113") FULL ROUND HEAD SMOOTH SHANK NAILS BOTH SIDES @ 6" O.C. OR EQUIVALENT



GYPSUM BOARD OR OTHER APPROVED THERMAL BARRIER

INSULSPAN APPROVED SEALANT AT LOCATIONS SHOWN

10d NAILS (3"x0.131") @ 8" O.C. EACH ROW, TWO ROWS STAGGERED OR PER LOCAL CODE

INSULSPAN APPROVED PANEL SEAL TAPE AT ROOF PANELS ONLY

NOTES:

1. THE DETAIL IS TO BE USED WITH INSULSPAN CONSTRUCTION DRAWINGS AND INSTALLATION GUIDE. REFER TO INSULSPAN CONSTRUCTION DRAWINGS FOR FINAL NAIL AND SCREW SCHEDULES.
2. ALL BUILDING COMPONENTS USED IN CONJUNCTION WITH THIS DETAIL SHALL BE IN COMPLIANCE WITH LOCAL CODE REQUIREMENTS.



SIP JOINT/DOUBLE LUMBER SPLINE

SCALE:N.T.S.

LAST UPDATE: OCT 24, 2013

400.04